

100% Swiss

The highest in Quality & Technology

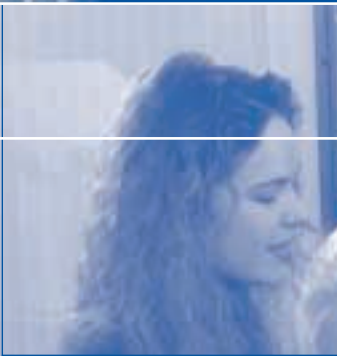


Automatic Drying and Ashing System **prepASH® 129**

- *Precisa is fast becoming one of the world's leading manufacturers of thermo-gravimetric analysis equipment.*
- *prepASH® 129 represents a revolutionary improvement in precision analysis in sample preparation.*
- *prepASH® 129 defines moisture and ash values and facilitates huge savings in workload and costs.*
- *Precisa instruments are market leaders in language-independent user guidance and data quality assurance in sample preparation.*
- *Precisa supports users with their own laboratories in the Far East and Europe.*

Precisa

■ The Balance of Quality ■



prepASH® is the new generation in thermo-gravimetric analysis instruments which offer:

- Enormous improvements in precision analysis
- A massive reduction in working time (up to 50%)
- Fully automatic processing of 29 samples and a reference pan, in one working cycle
- Processing in accordance with the latest quality guidelines, monitored within a wide temperature range of 50°–1000 °C

Safety, reliability, real-time controls and error-free documentation of all the fundamental data

- Storage of all the fundamental data and operating parameters, such as changes in sample weight, temperature, gases, etc.

Fully automatic measurement of drying and ignition residue

- Automatic compensation of the pan lift
- Continuous weighing and storage of weight changes
- Option to develop new methods by entering new curves with a temperature-time diagram. The system follows the specified curve precisely.

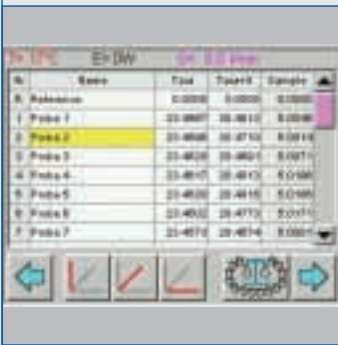
Practical touch screen controls

- High-resolution graphics screen (colour, VGA 5.7")
- Very simple, language-independent user guidance using icons with an easy-to-read display
- The sample chamber is opened and closed automatically by touching the icons



Process memory with graphical parameter definition

- Process sequence with all the parameters on the colour screen
- Red temperature-time curve can be changed any time
- Enter new limit data, both numerically and directly on the graphical curve
- Program levels are highlighted in colour



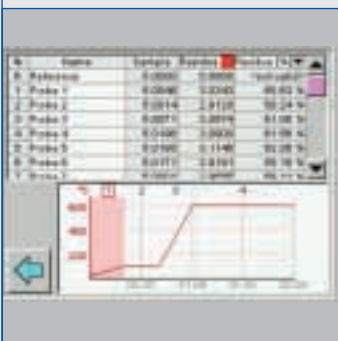
Perfect quality records without an additional PC

- Real-time display of the weight loss during the drying and ignition process
- Error-free result recording in accordance with FDA/GLP guidelines
- Sample recognition using graphics
- Display of all 29 samples, individually or in groups (coloured)
- Flashcard for access authorisation and storage of results



Further increase in sample throughput

- Easy to read transmission of all the weighing-in data, such as weights, positioning etc. from an independent dosing station



prepASH® offers automatic measurement precision for all samples through one or more standards.

The reference samples ensure the reliability of the process for the complete certification of chemical laboratories.

Technical Data *prepASH® 129*

Weighing system:	
Weighing range [g]	120
Units	g
Minimum sample weight [g]	0.1
Readability [g]	0.0001
Heat source:	
Temperature range	50 °C – 1,000 °C
Heating control system:	
Ramp time	0 – 6 h
Holding time	0 – 24 h
Auto stop	n x 0.1 mg/min
Atmosphere:	
Oxygen	0/3/6/9 l / min
Nitrogen	0/3/6/9 l / min
Air	0/3/6/9 l / min
Results:	
Weight loss / Residual weight	g/%/‰
Weight loss / Residual weight related to pre-interval	g/%/‰
Monitoring:	
Acoustic	X
Printout:	
Graphic	X
Table / Method	X
Memory capacity:	
Process memory	100
Measured value memory	About 200 series of measurements
Operation:	
Display	5.7" Colour graphic
Keyboard	touch screen
Menu-controlled	X
Special features:	
Weighing-in on an external dosing station	Optional
Calibration:	
Balance	X
Temperature	X
Data outputs:	
Interface for a PC	RS232
Interface for an external balance (dosing station)	RS232
Interface for a printer (HP-PCL3)	Centronics
Alarm output	X
Connection:	
Mains voltage	230 V
Frequency	50 – 60 Hz
Current input	15 A
Subject to technical alterations.	



Precisa

■ The Balance of Quality ■

Precisa Instruments AG
 Moosmattstrasse 32 • CH-8953 Dietikon
 Tel. ++41-1-744 28 28 • Fax ++41-1-744 28 38
 www.precisa.com • marketing@precisa.ch